



KNITTING PURE & SIMPLE

MOUNTAIN COWL

**Size-**

Length 9 inches, width 30 inches.

Materials- 1 skein of Lorna's Laces Haymarket yarn (215 yards). Haymarket is a worsted weight yarn.

24 inch circular needle size 8, or what ever size gets the correct gauge.

Gauge- in lace pattern 16 sts equal 4 ins.

Abbreviations-

k- knit.

p- purl.

st- stitch.

ins- inches.

ssk- slip one st as if to k, slip one st as if to p, slip the tip of the left needle into the fronts of these sts and k them together.

k 2 tog- knit 2 sts together as one.

rep- repeat the directions between the *.

yo (yarn over)- bring yarn to front of work before knitting the next stitch. Makes a stitch.

Dbl. Dec.- slip the next 2 sts as if to k 2 tog, k 1, pass the slipped sts over.

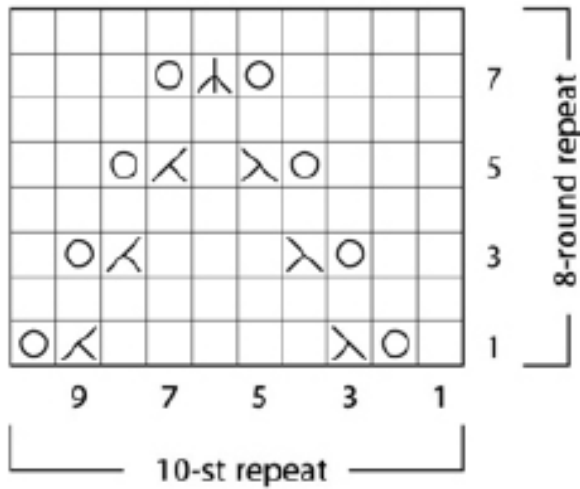
Stitches Used-

Mountain Chevron Lace pattern-
(a multiple of 10 sts in the round)

Round 1- *k 1, yo, ssk, k5, k 2 tog, yo*, rep to end of round.
 Round 2 (also 4, 6, 8)- knit.
 Round 3- *k 2, yo, ssk, k 3, k 2 tog, yo, k 1* rep to end of round.
 Round 5- *k 3, yo, ssk, k 1, k 2 tog, yo, k 2* rep to end of round.
 Round 7- *k 4, yo, dbl dec, yo, k 3* rep to end of round.

Cast on 120 sts. Place a marker on the needle to mark beginning of round. Join into a round, being careful not to twist
 Purl one round.
 Begin lace pattern, repeating the 10 sts to end of round, following row by row directions or chart.
 Work the 8 row pattern 8 times.
 Purl one round.
 Bind off loosely.

Mountain Chevron Lace Pattern
 (multiple of 10 sts)



KEY

- | | | | |
|--|------|--|---------|
| | Knit | | K2tog |
| | Yo | | Dbl dec |
| | Ssk | | |

